

37 White House, Burrell Road, Haywards Heath, RH16 1AJ

£1,050 Per Calendar Month

PSPhomes

www.psphomes.co.uk

CENTRAL CONVENIENCE | PART FURNISHED | This modern third floor apartment is situated in a fantastic location, a short walk to Haywards Heath mainline station. Featuring a high specification throughout and allocated parking. This property is available immediately.

The Flat

The flat comprises of an open plan living room/kitchen with in-built appliances. The double bedroom is a good size and features fitted wardrobes; a well-proportioned shower-room.

Further attributes include gas fired central heating, 'utility cupboard with washing machine', allocated parking, oak flooring and communal lift.

Location

The White House is conveniently located on Burrell Road, a short walk of the mainline station with its fast and regular services to London (approx. 47mins to London Bridge/Victoria), Brighton (20mins) and Gatwick International Airport (20 mins).

Waitrose and Sainsbury's superstores are also close as is Haywards Heath town centre. Haywards Heath's town centre provides further shopping facilities via "The Orchards". Nearby, "The Broadway" boasts a variety of bars and restaurants.

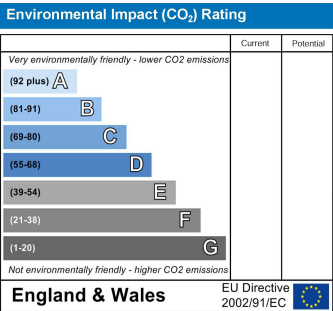
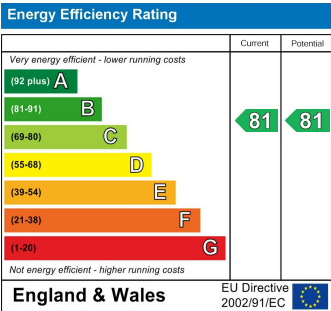
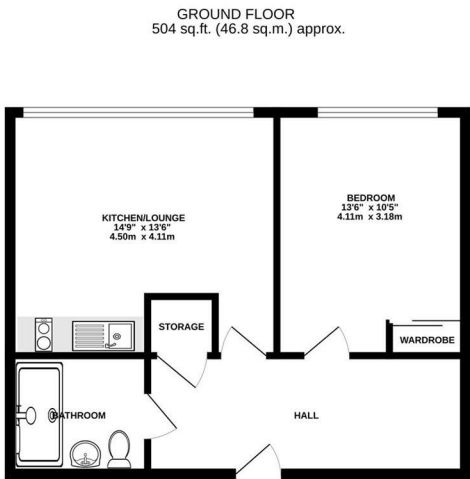
By car surrounding areas are accessed via the A272 and A23 (M) with the latter lying approximately 6 miles west at Warringlid/Bolney.

Information

Local Authority: Mid Sussex District Council
Council Tax Band: B

Permitted Fees:
Holding deposit - one weeks rent
Deposit - five weeks rent

The holding deposit will be refunded against the first month's rent but can be retained if the applicant withdraws from the property, fails the reference checks due to false or misleading information or fails the Right to Rent checks.



PSPhomes

VIEWING BY APPOINTMENT WITH PSP HOMES
54 Church Road, Burgess Hill, West Sussex, RH15 9AE. TELEPHONE 01444 250999
www.psphomes.co.uk

Much care is taken in the preparation of our particulars, but we cannot guarantee that the information given is accurate. Property details are issued as a general guide only and may not form any part of an offer or contract. We recommend that intending purchasers check details personally.