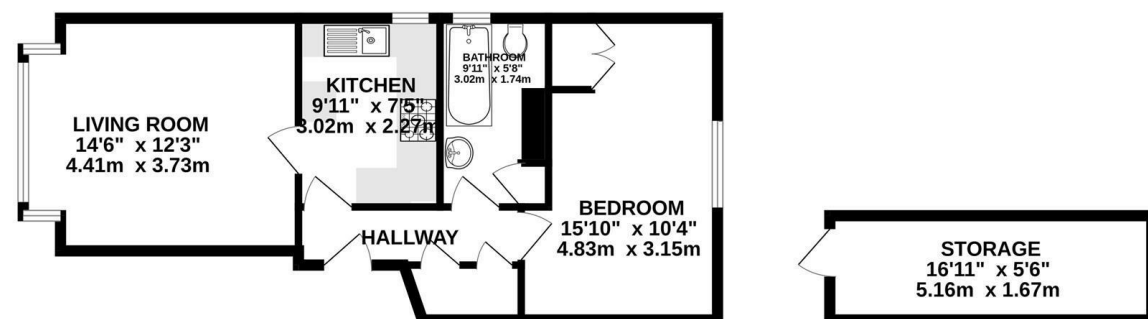
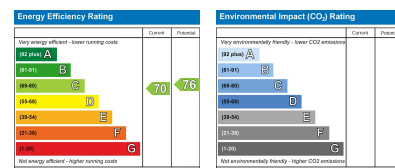


GROUND FLOOR
590 sq.ft. (54.8 sq.m.) approx.



TOTAL FLOOR AREA : 590 sq.ft. (54.8 sq.m.) approx.
Plans for illustration purposes only. Intending purchasers should check measurements personally.
Made with Metropix ©2025



77B Mill Road, Burgess Hill, West Sussex, RH15 8DY

Guide Price £220,000 Leasehold

Let's Get Social

PSPhomes

@psphomes /psphomes www.psphomes.co.uk

VIEWING BY APPOINTMENT WITH PSP HOMES
54 Church Road, Burgess Hill, West Sussex, RH15 9AE. TELEPHONE 01444 250999

Much care is taken in the preparation of our particulars, but we cannot guarantee the information given is accurate.
Property details are issued a general guide only and may not form any part of an offer or contract. We recommend intending purchasers check details personally.

PSPhomes

@psphomes

/psphomes

www.psphomes.co.uk

77B Mill Road, Burgess Hill, West Sussex, RH15 8DY

- * A Characterful Victorian One-Bedroom Apartment
- * Two allocated parking spaces
- * No onward chain
- * Spacious living space
- * Beautifully presented
- * Walking distance to the town and station

Welcome Home...

A Characterful Victorian One-Bedroom Apartment in the Heart of Burgess Hill – With Parking and No Onward Chain.

This charming and beautifully presented one-bedroom upper ground floor flat forms part of an attractive Victorian conversion, superbly positioned just moments from Burgess Hill town centre and mainline station. Offering the perfect balance of character features and modern touches, it makes an ideal first-time purchase, downsizer or investment property. Sold with the benefit of no onward chain.

Step Inside...

Step through the communal entrance and into a private hallway, which gives access to all rooms and includes two handy under stairs storage cupboards. The kitchen is smartly appointed with a range of wall and base units, tiled splashbacks and worktop space.

The standout living room is an elegant and inviting space measuring approx. 14'6 x 12'3. High ceilings, intricate coving, original floorboards and a striking feature fireplace are all enhanced by a stunning bay window which floods the room with natural light.

The neutral bathroom features a full-sized bath with shower over, WC and wash basin – all finished in a classic white suite. The bedroom is a great size with beautiful wooden flooring, dual windows and a built-in cupboard, creating a tranquil and comfortable retreat.

Outside...

To the front of the property is a gravelled driveway providing private parking for two vehicles – a rare and valuable feature for a town centre flat. A set of steps leads up to the attractive communal entrance. To the rear there is a large storage cupboard.



Location...

Mill Road is a well-connected residential road within easy walking distance of Burgess Hill mainline station – ideal for commuters travelling to London or Brighton. The town centre is just around the corner, with a great selection of shops, cafes and restaurants, including a Waitrose supermarket. The nearby Triangle Leisure Centre offers excellent fitness facilities, while the A23 and surrounding countryside are both within easy reach for those who enjoy outdoor pursuits.

Further Attributes...

- Gas central heating
- Double glazing throughout
- Neutrally decorated
- Offered with no onward chain
- External storage

Finer Details...

Local Authority: Mid Sussex Council

Council Tax Band: B

Tenure: Leasehold - We have been informed the lease is 999 years from approximately 1983. The current owner of the property, is also the freeholder of the building.

Buildings Insurance - This is split between three properties on a 50%/25%/25% basis, with this property accountable for 25% share.

The flat is self-maintaining and any external works are split on 50%/25%/25% basis, with this property accountable for a 25% share.

Services: Mains water, electricity, gas and drainage are supplied to the property.

