

14A Valebridge Road, Burgess Hill, RH15 0RB

£1,350 Per Calendar Month

PSPhomes

www.psphomes.co.uk

14A VALEBRIDGE | An exceptional brand new apartment offering contemporary living, high specification, walking distance to the town centre and station. Offered unfurnished and available now!

The Apartment

Valebridge Road offers a beautifully presented, modern two-bedroom apartment that has been thoughtfully refurbished throughout to an exceptional standard. The stylish open-plan reception and 'Rever' kitchen create a wonderful space for both relaxing and entertaining, complemented by a sleek, high specification bathroom. Both bedrooms are generously proportioned, making this a home that is as practical as it is elegant.

The Location

The property enjoys a convenient position on the northern side of Burgess Hill, with Wivelsfield Station, Words End Recreation Ground and a handy parade of local shops right on the doorstep. The town centre is easily accessible and offers a wide range of amenities, including a Waitrose supermarket, whilst The Triangle Leisure Centre and the A23 link road are both just a short drive away. Excellent road and rail connections provide swift access to London, Brighton, Gatwick Airport and, more locally, to Haywards Heath and the historic town of Lewes.

Finer Details

Council Tax Band B; £1,832.50 for 2025/26 (For a guide

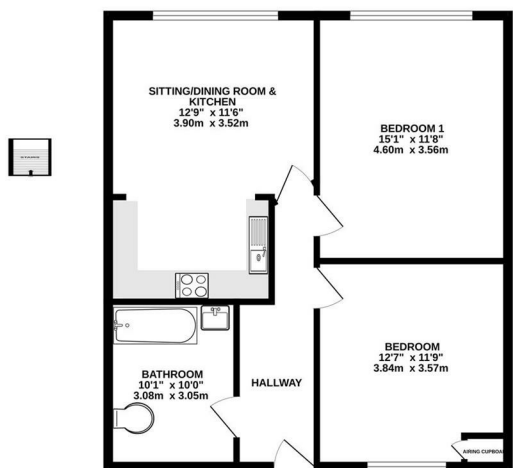
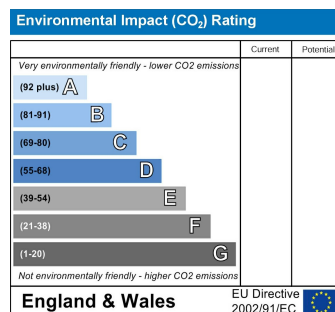
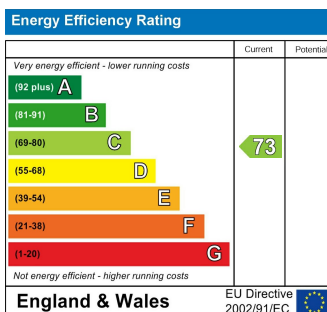
only. Please contact Mid Sussex District Council for exact figures)

Permitted Payments:

Holding Fee: One weeks rent

Deposit: Five weeks rent

The holding deposit will be refunded against the first month's rent but can be retained if the applicant withdraws from the property, fails the reference checks due to false or misleading information or fails the Right to Rent checks.



TOTAL FLOOR AREA: 747 sq.ft. (69.4 sq.m.) approx.
Plans for illustration purposes only. Intending purchasers should check measurements personally.
Made with Metropac CAD2005.

PSPhomes

VIEWING BY APPOINTMENT WITH PSP HOMES

54 Church Road, Burgess Hill, West Sussex, RH15 9AE. TELEPHONE 01444 250999

www.psphomes.co.uk

Much care is taken in the preparation of our particulars, but we cannot guarantee that the information given is accurate. Property details are issued as a general guide only and may not form any part of an offer or contract. We recommend that intending purchasers check details personally.